



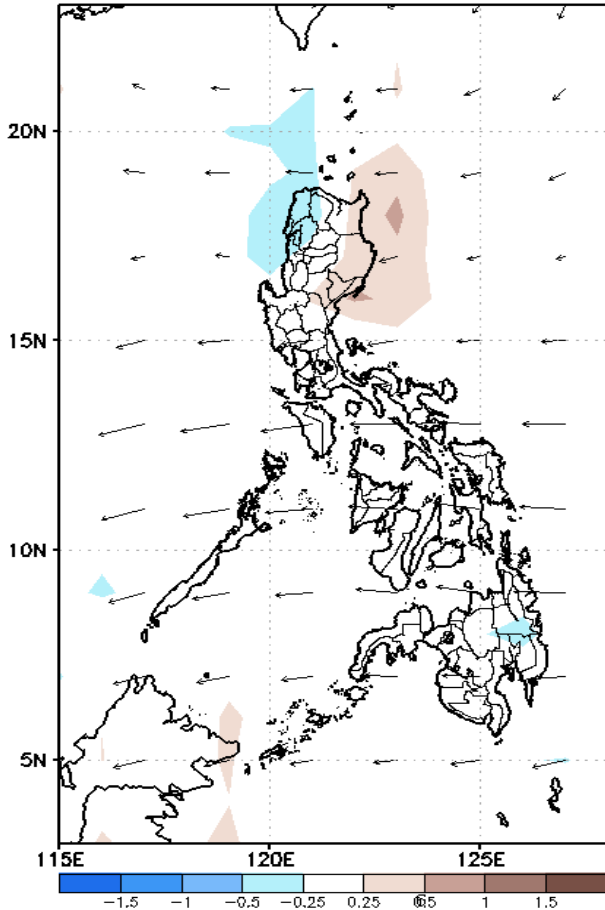
Week 1 & Week 2 Forecast for the Philippines using GEFS Model



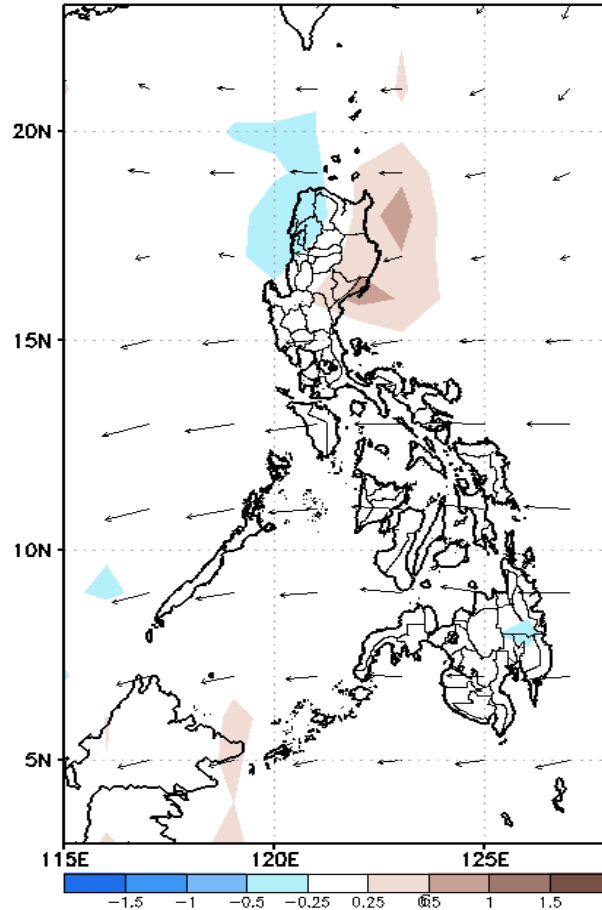
GEFS Week-1 Forecasts: Divergence & Wind Anomaly

Week 1: Sep 30- Oct 06, 2021

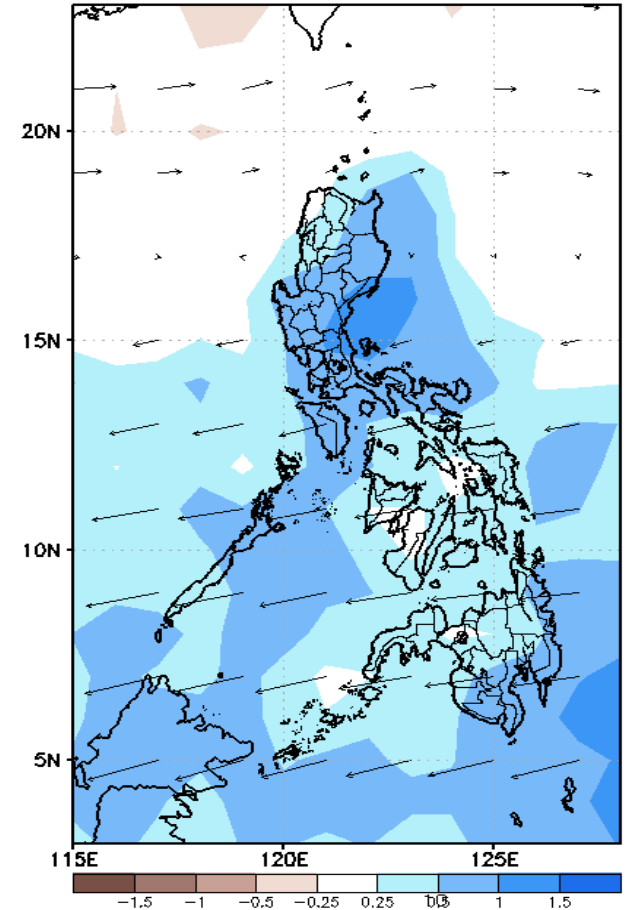
GEFS Week-1 850-hPa Divergence and Wind Anom
Valid: 20210930 - 20211006



GEFS Week-1 700-hPa Divergence and Wind Anom
Valid: 20210930 - 20211006



GEFS Week-1 200-hPa Divergence and Wind Anom
Valid: 20210930 - 20211006



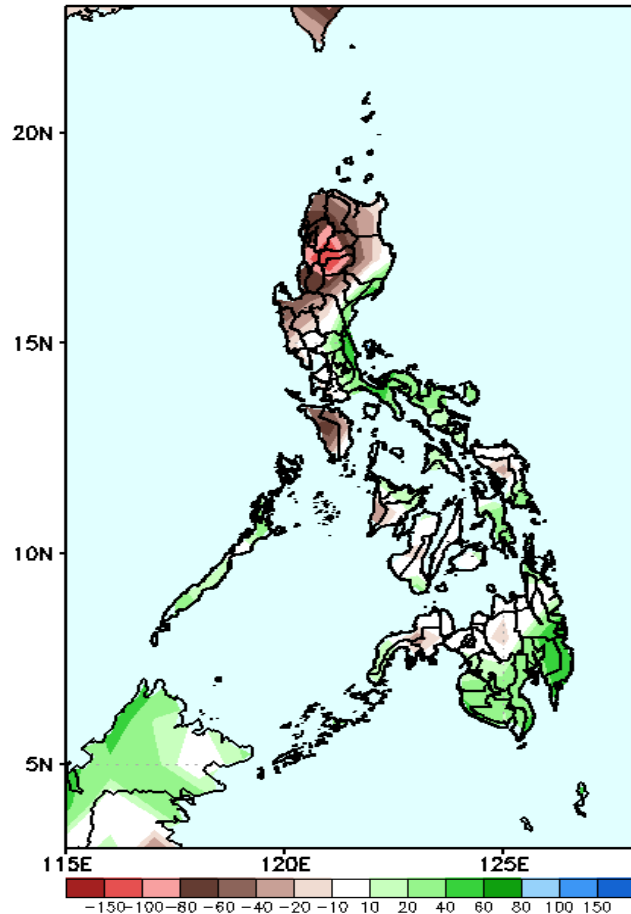
Upper and low level Divergence suggest likelihood of light precipitation in most parts of the country. Easterlies affecting the rest of the country attributing to light to moderate rains due to thunderstorms during the forecast period.



Precipitation Anomaly and Exceedance Probability > 25/50 mm

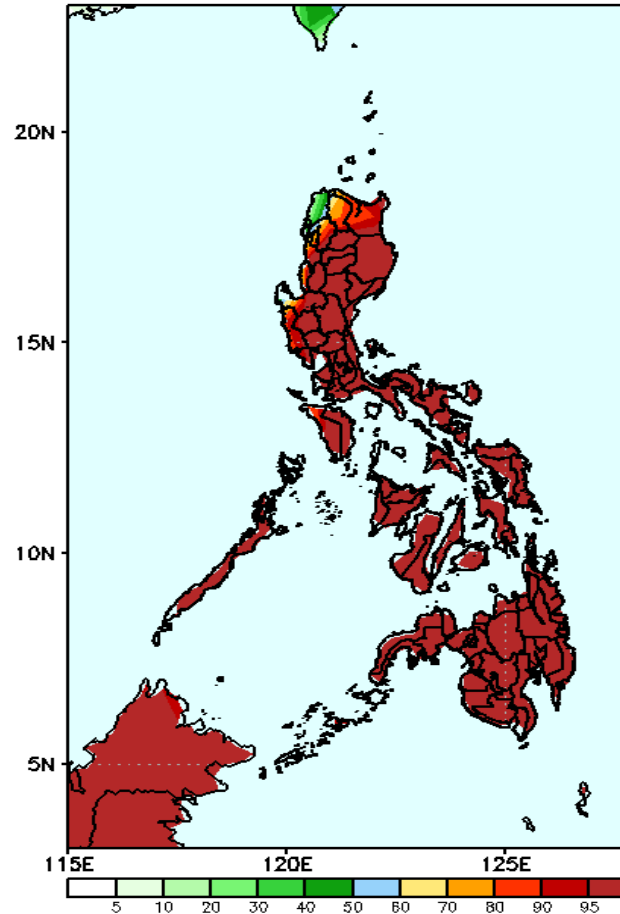
Week 1: Sep 30- Oct 06, 2021

GEFS Week-1 Precip Anomaly
Valid: 20210930 - 20211006



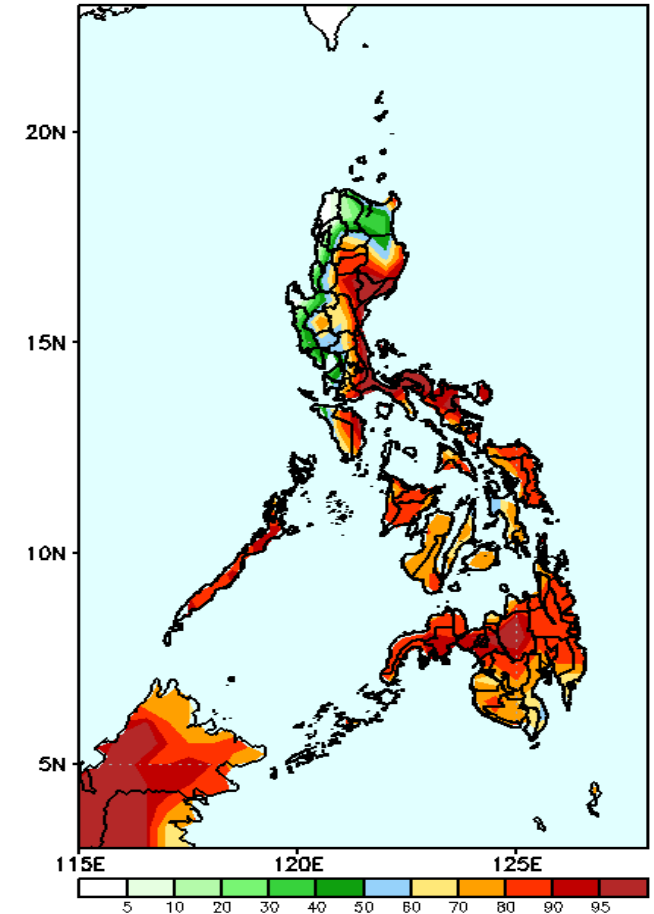
Rainfall deficit of 40-150mm is expected in Ilocos & Cordillera Region and Mindoro while 40-60mm increase of rainfall in CALABARZON, Bicol Region and southern Mindanao during the forecast period.

GEFS Week-1 Exceedance Prob. > 25mm
Valid: 20210930 - 20211006



High probability of rainfall to exceed 25mm in most parts of the country during the forecast period.

GEFS Week-1 Exceedance Prob. > 50mm
Valid: 20210930 - 20211006

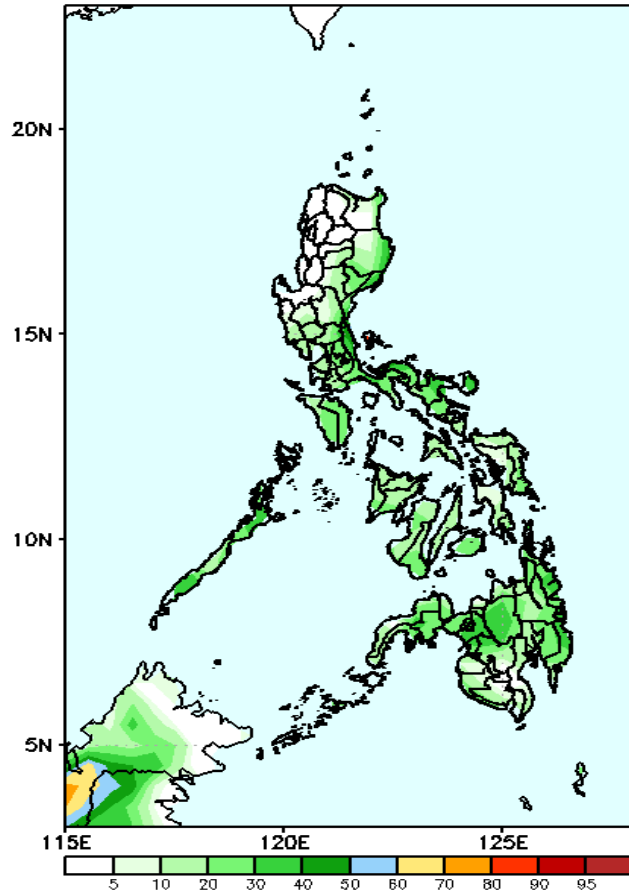


High probability of rainfall to exceed 50mm in most parts of the country except in Ilocos Region Apayao and Cagayan during the forecast period.

Exceedance Probability > 100/150/200 mm

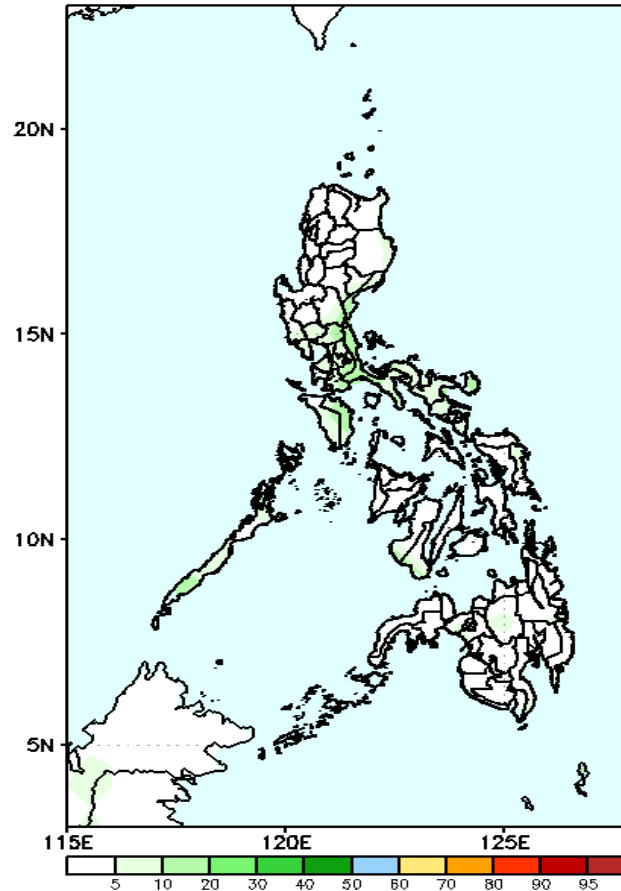
Week 1: Sep 30- Oct 06, 2021

GEFS Week-1 Exceedance Prob. > 100mm
Valid: 20210930 - 20211006



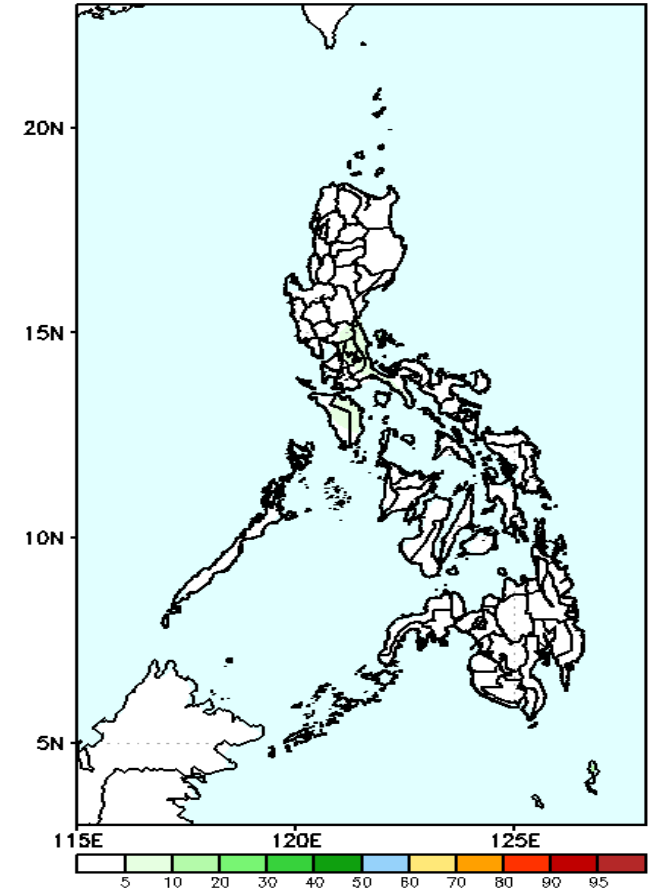
Less probability of rainfall to exceed 100mm in most parts of the country is expected during the forecast period.

GEFS Week-1 Exceedance Prob. > 150mm
Valid: 20210930 - 20211006



Less probability of rainfall to exceed 150mm in most parts of the country is expected during the forecast period.

GEFS Week-1 Exceedance Prob. > 200mm
Valid: 20210930 - 20211006



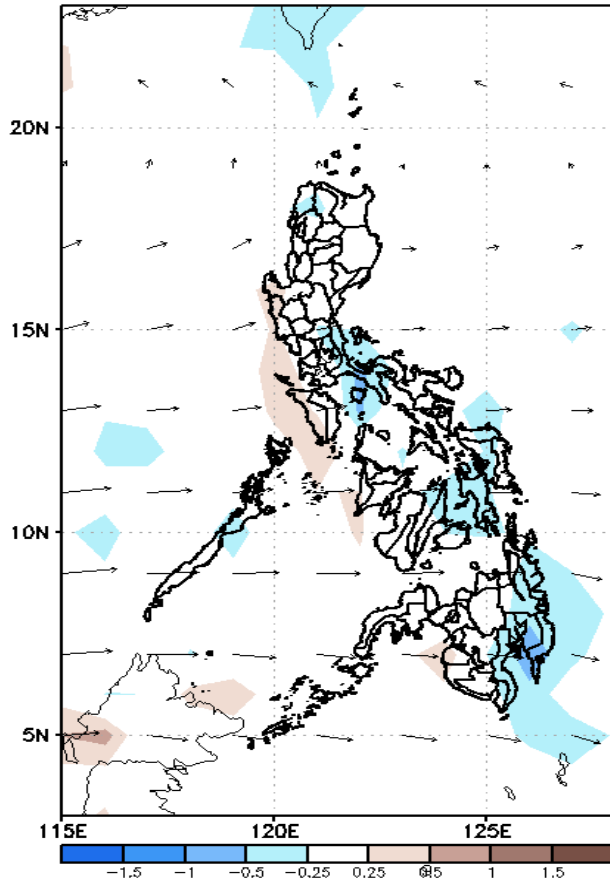
Less probability of rainfall to exceed 200mm in most parts of the country is expected during the forecast period.



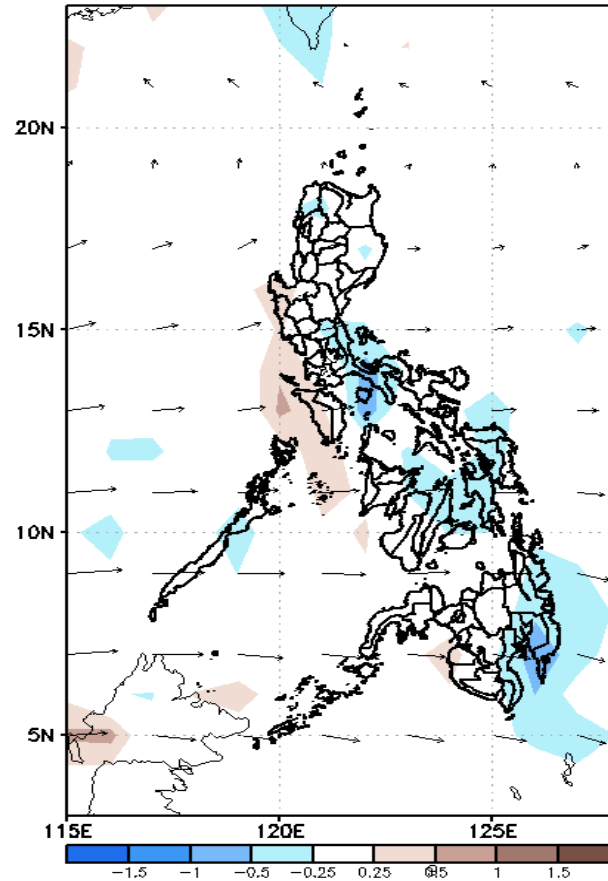
GEFS Week-2 Forecasts: Divergence & Wind Anomaly

Week 2: Oct 07-13, 2021

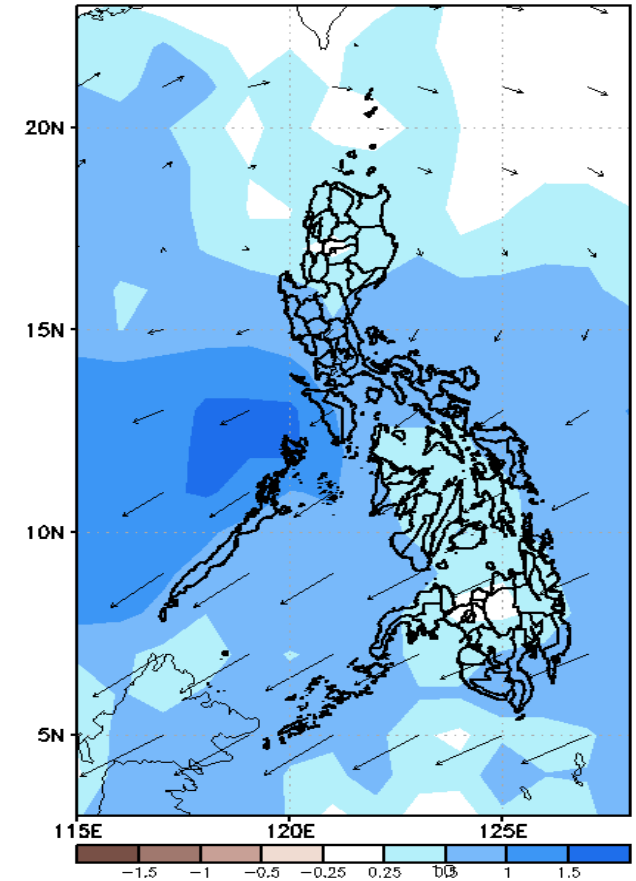
GEFS Week-2 850-hPa Divergence and Wind Anom
Valid: 20211007 - 20211013



GEFS Week-2 700-hPa Divergence and Wind Anom
Valid: 20211007 - 20211013



GEFS week-2 200-hPa Divergence and Wind Anom
Valid: 20211007 - 20211013

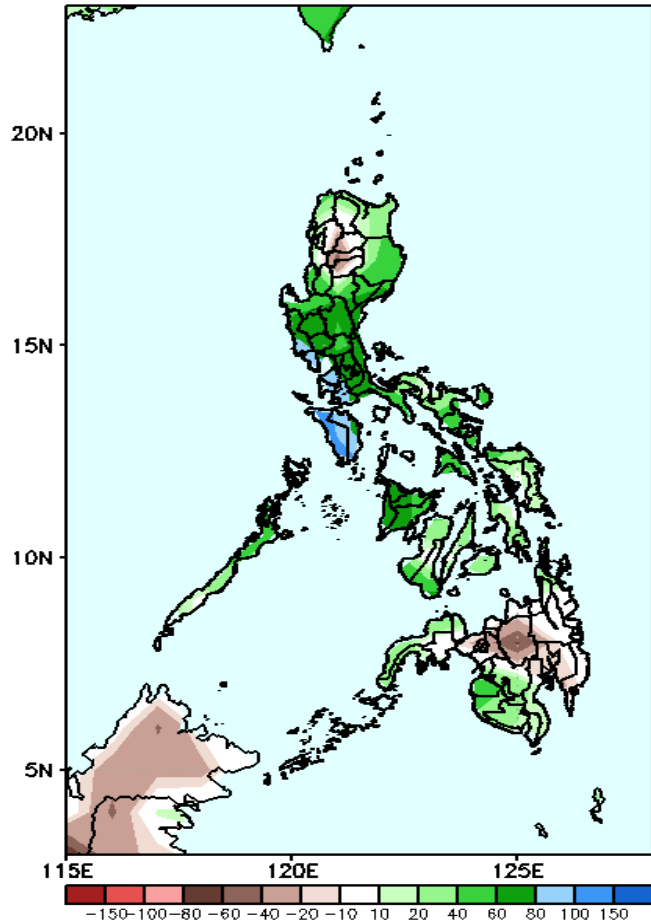


Upper and low level Divergence suggest high likelihood of light to moderate precipitation in most parts of the country. Southwest monsoon affecting the western section of the country while Easterlies affecting the rest of the country attributing to light to moderate rains due to thunderstorms during the forecast.

Precipitation Anomaly and Exceedance Probability > 25/50 mm

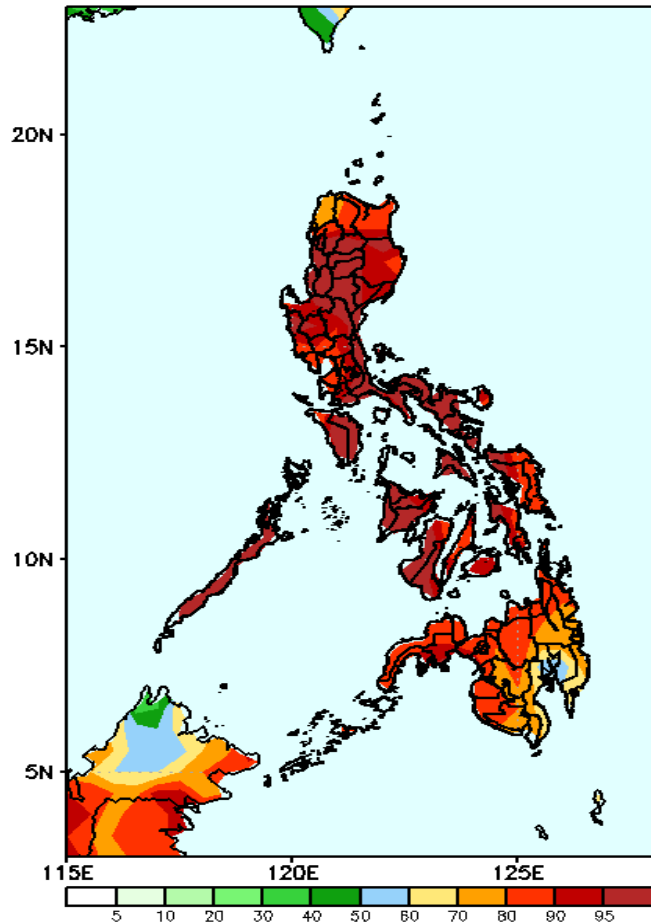
Week 2: Oct 07-13, 2021

GEFS Week-2 Precip Anomaly
Valid: 20211007 - 20211013



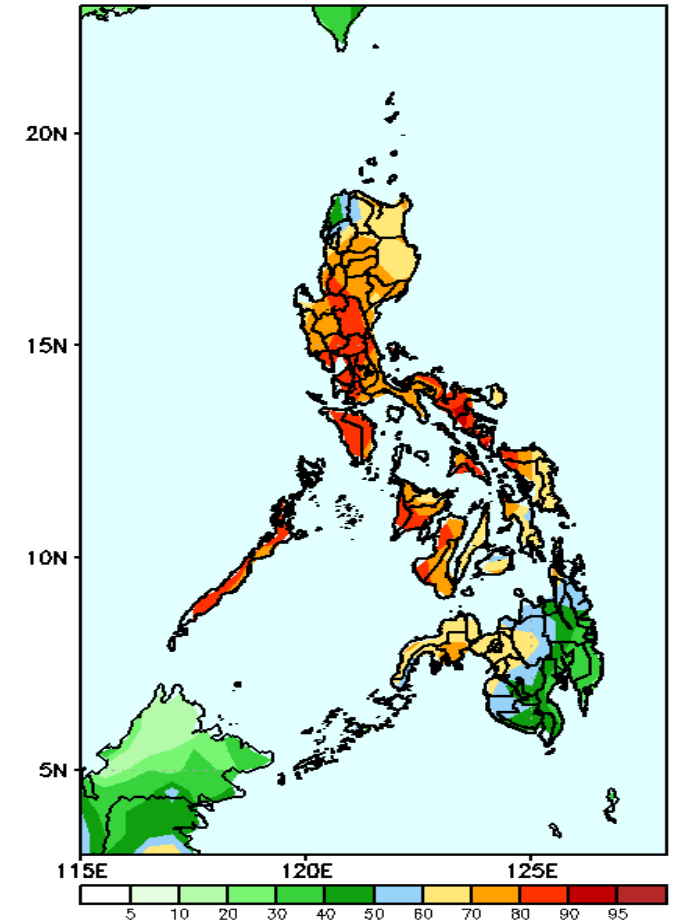
Increase of rainfall 40-150mm is expected in most parts of the country (up to 150mm in Mindoro) except in Cordillera Region, eastern parts of Mindanao including Bukidnon where there is 40-80mm. decrease during the forecast period

GEFS Week-2 Exceedance Prob. > 25mm
Valid: 20211007 - 20211013



High probability of rainfall to exceed 25mm in most parts of the country during the forecast period

GEFS Week-2 Exceedance Prob. > 50mm
Valid: 20211007 - 20211013

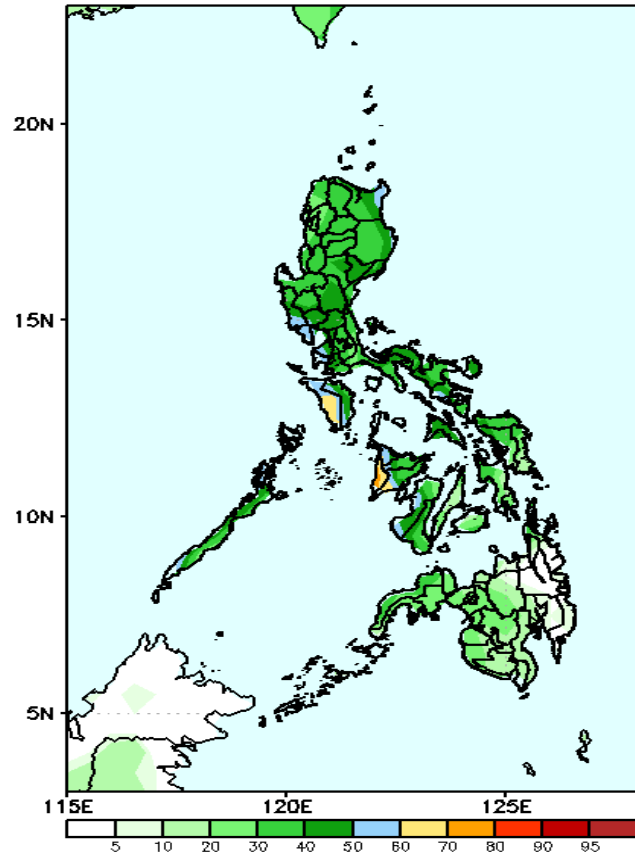


High probability of rainfall to exceed 50mm in most parts of Luzon, Visayas and Zamboanga Peninsula while less likely for the rest of Mindanao during the forecast period.

Exceedance Probability > 100/150/200 mm

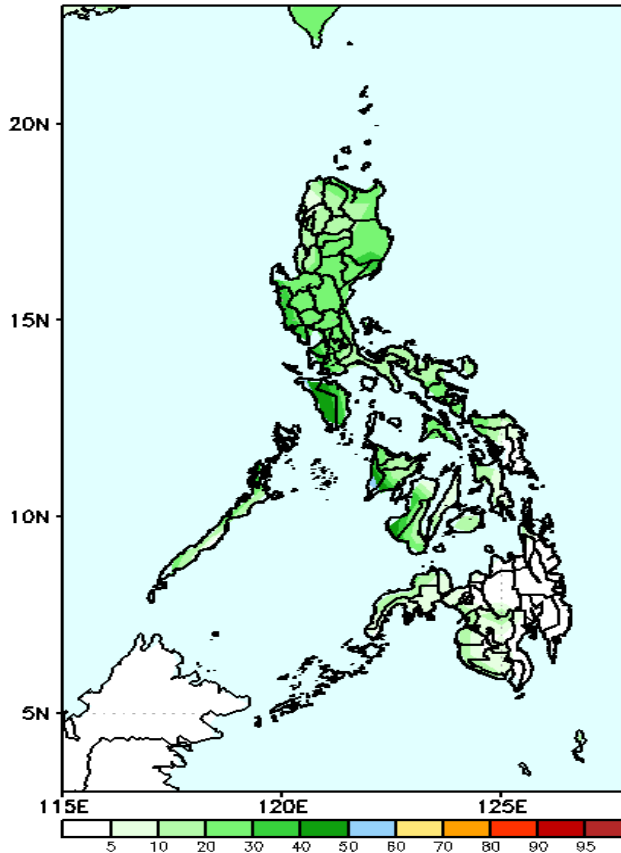
Week 2: Oct 07-13, 2021

GEFS Week-2 Exceedance Prob. > 100mm
Valid: 20211007 - 20211013



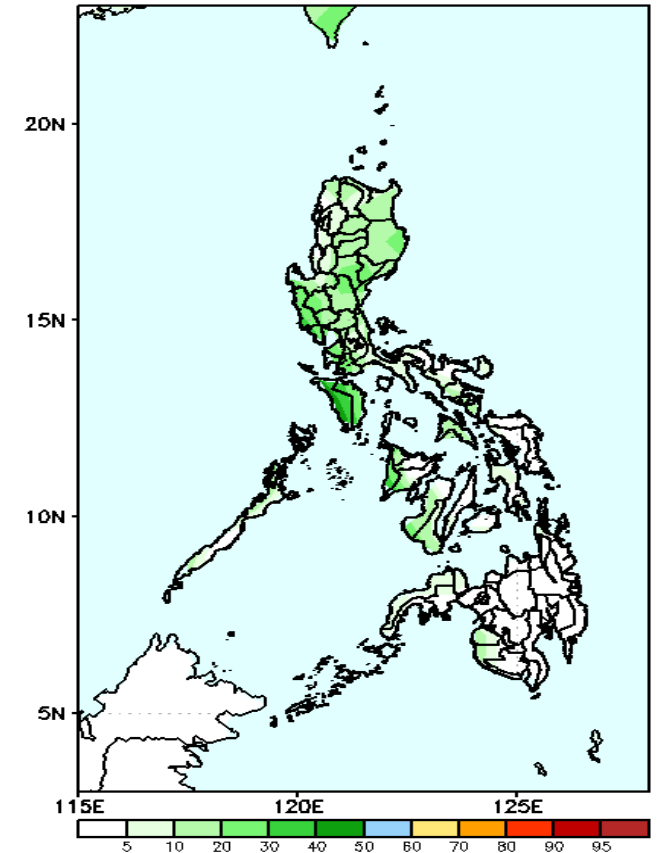
Less probability of rainfall to exceed 100mm in most parts of the country is expected during the forecast period.

GEFS Week-2 Exceedance Prob. > 150mm
Valid: 20211007 - 20211013



Less probability of rainfall to exceed 150mm in most parts of the country is expected during the forecast period.

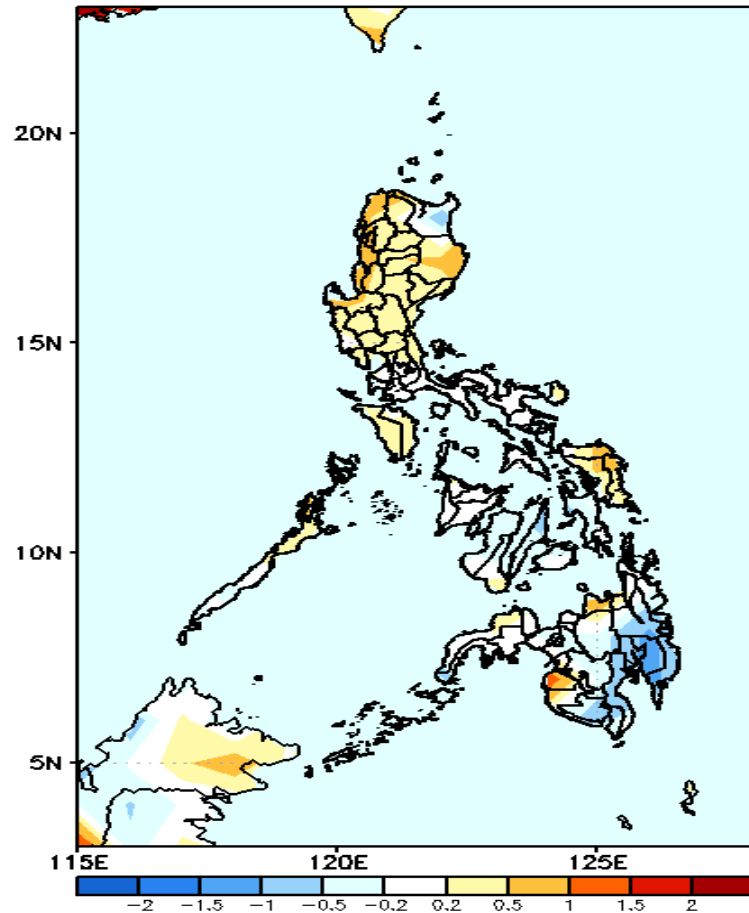
GEFS Week-2 Exceedance Prob. > 200mm
Valid: 20211007 - 20211013



Less probability of rainfall to exceed 200mm in most parts of the country is expected during the forecast period.

GEFS Week-1 & 2 Forecasts: T2m Anomaly

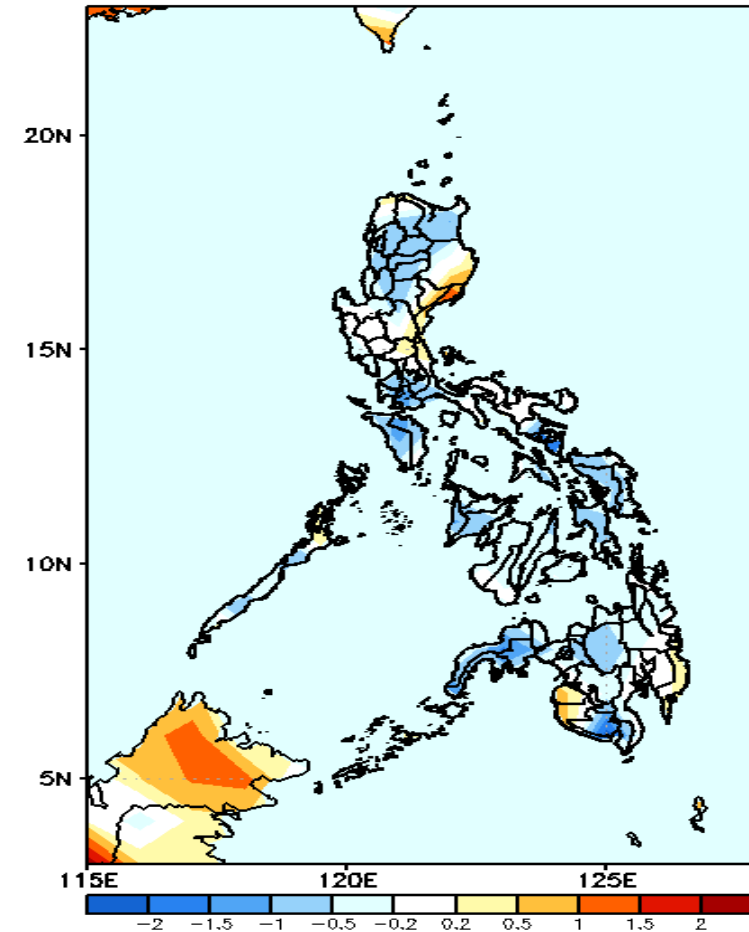
GEFS Week-1 T2m Anomaly
Valid: 20210930 - 20211006



2m Temperature Week 1: Sep 30- Oct 06, 2021

Average to slightly warmer than average surface air temperature will likely experience in most parts of the country except Davao Region where slightly cooler than average temperature is expected during the forecast period.

GEFS Week-2 T2m Anomaly
Valid: 20211007 - 20211013



2m Temperature Week 2: Oct 07-13, 2021

Average to slightly cooler than average surface air temperature will likely experience in most parts of the country except in eastern Isabela, Aurora, Maguindanao & Sultan Kudarat where slightly warmer than average temperature is expected.

